



CORAL SEA
MARINA | RESORT

*Let the adventure begin
- you'll love every moment...*



Welcome

Contact: Coral Sea Marina Office
Phone +61 7 4946 2400
Email: marina@csmr.com.au
Web: csmr.com.au
Location: Shingley Drive, Airlie Beach, Qld 4802
Post: PO Box 579, Airlie Beach Qld 4802
VHF Channel 09 call sign 'Coral Sea Marina'
Office hours: 8:00am to 5:00pm daily,
closed December 25.



The Marina

Located in the township of Airlie Beach, Queensland, our marina is the gateway to the Great Barrier Reef (seventh wonder of the world), as well as the 74 beautiful Whitsunday islands.

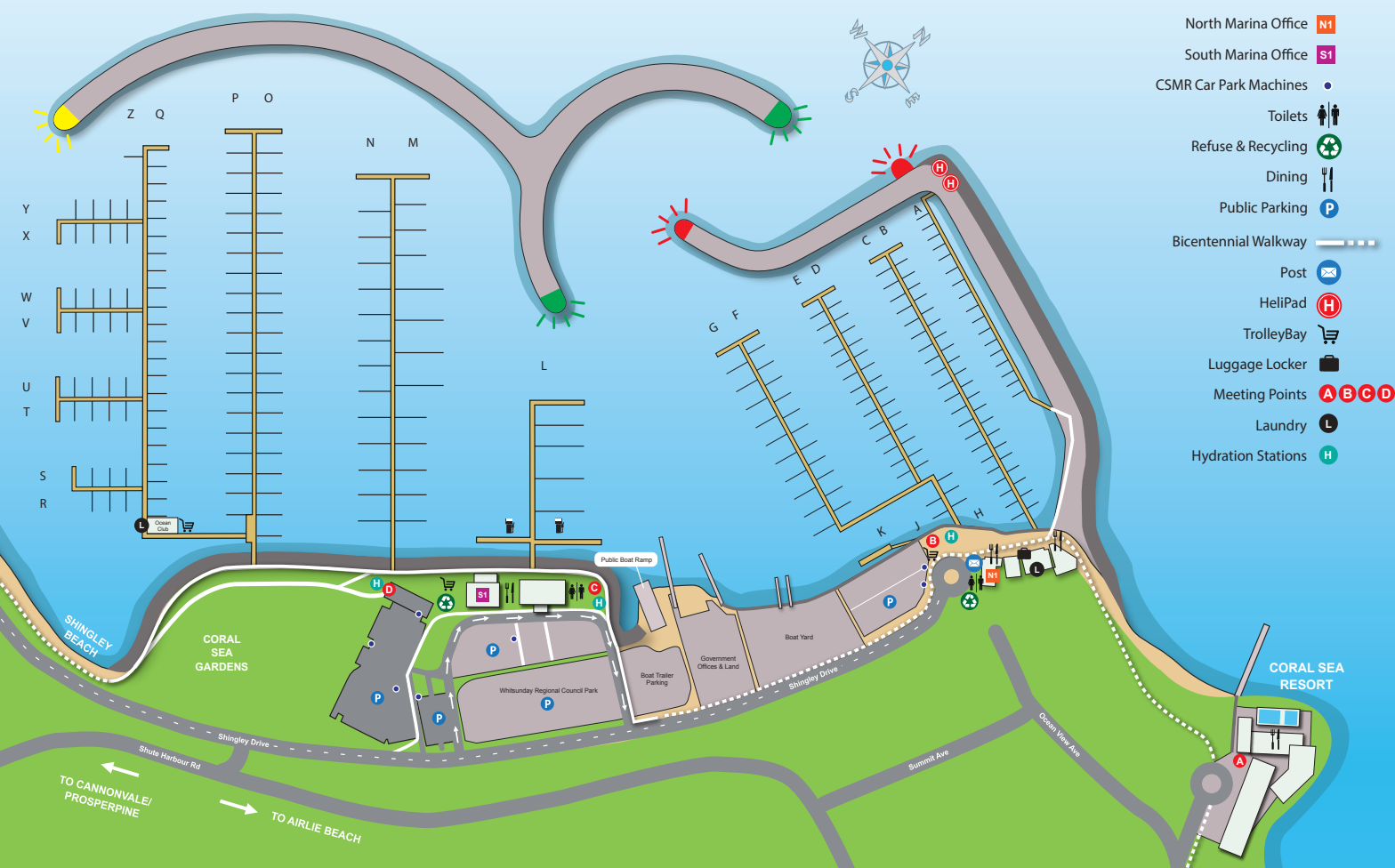
Only a short 30 minute journey by car from Whitsunday Coast Airport (Proserpine), or by ferry from Hamilton Island Airport. Coral Sea Marina boasts 520 wet berths in an idyllic, prime location. A range of comprehensive marine services are available within the marina safe-haven created by our iconic breakwater, all of which can be located in this booklet.

Our marina resort village is a short 1km waterfront walk to the heart of Airlie Beach, or a 5 minute drive in our courtesy car to local provisioning, medical and many other key services available throughout the Whitsunday community.

The hotel at the Coral Sea Marina Resort is located along the boardwalk towards Airlie Beach, just past the north village. The iconic hotel offers an enticing array of facilities, including 25 metre pool and award-winning restaurant, as well as impressive views out towards the islands and Pioneer Bay.

Should you wish to book any tours, accommodation or restaurants whilst staying with us at the marina, please visit our Guest Services team during office hours and they will be able to assist with your requirements.

Coral Sea Marina Resort provides the perfect place to stay, play and explore the Whitsundays.





Arrival & Marina Information

The marina comprises of 520 wet berths and can accommodate vessels up to 80m. Each berth has fresh water and 15amp shore power included. Three phase power requirements can be catered for. Premium services available include access to Ocean Club, courtesy cars, helicopter transfer service, after hours security, pump out facilities, 24 hour fuel (including fast flow diesel), CCTV and secure gate access. The marina is protected by a unique rock wall breakwater – a perfect place for both long and short term stays.

VHF Radio

Coral Sea Marina monitors VHF Channel 09 between 8am – 5pm. Call Sign 'Coral Sea Marina'.

Village Wi-Fi

Guest Wi-Fi is now readily available throughout the marina villages. For login details please contact our Guest Services team. Wi-Fi Hotspots are also located at Ocean Club, The Garden Bar Bistro, Kiosk Café, Sorrento Restaurant & Bar and The Rocks.

Berthing

Berths are available from 12noon to 11am (on day of departure). Should you require an earlier berthing time please make arrangements with our Guest Services team, who will endeavour to meet your requirements where possible.

Due to the high volume of vessel traffic, occasionally there may be a need for temporary arrangements to be made.

If entering the marina after hours, please contact us during office hours for your berthing allocation and we will SMS you the Night Duty

Manager contact. They can assist with berthing and providing access cards so you can use the amenities.

Extend Your Stay

We understand that you may not get to experience all of the Whitsundays in a short stay and you may need to extend. Should that be the case, please notify us at your earliest convenience. Please note that due to other bookings made in advance, we may request you relocate to a new berth for the duration of your stay.

To secure a berth for future visits, it is advisable to book in advance:

Phone: + 61 7 4946 2400

Email: marina@csmr.com.au

Weather Forecasts

A three-day weather forecast, including the tide chart and sea level pressure prognosis is printed daily. Copies are available for collection the marina office. Weather boards displaying the current weather are also located in both the marina villages, as well as links to the daily weather being accessible on our eConcierge app.

Security Gate Access

Every evening from 6pm to 5am each marina gate is locked for security purposes. A marina access card will be issued to you to allow after hours access with a \$50 refundable deposit required. On your departure day, please return your access card to the marina office and your deposit will be refunded. Alternatively, marina access cards can be returned to the after hours

drop boxes located outside the south marina office front door, the north marina office front door and at the end of O/P Arm gate. We will then contact you to arrange a deposit refund.

Fuelling

The fuel wharf is available for public use with 24/7 access. Card payment facilities are available on the fuel wharf. Due to the high volume of boat movements, it is essential to make a fuel booking in advance with the marina office during office hours. To reduce congestion, we allocate half an hour for each vessel to utilise the fuel, water and pump out facilities and to assist the next vessel to dock for its scheduled time. We appreciate your understanding and cooperation at the fuel wharfs.

LPG Refills

Gas refills are available from both north and south marina offices. Please contact the marina office for gas fill scheduling and collection of filled LPG cylinders, or to arrange after hours collection you may contact the Night Duty Manager. Fees apply.

Laundry

Laundry facilities are available from 5:30am – 9:00pm. Change machines are available for your convenience at the north village laundry and the Ocean Club laundry.

Luggage lockers are also available in the north marina laundry.



Concierge Service

Dockhand: Upon your arrival into Coral Sea Marina our dockhand can meet you at your berth to catch your lines and ensure an easy and comfortable arrival into the marina. The dockhand will be able to provide you with an overview of the marina services, facilities and information about the vibrant township of Airlie Beach. If you are looking to get a gas bottle refill or schedule in for the fuel dock, the dockhand can assist in facilitating this process.

Courtesy Car: Private marina guests are able to book one of our four cars for two hours to assist with provisioning and accessing local suppliers. Ask the friendly team about car availability and terms and conditions. To make a booking please contact the office.

Transfer Service: As a part of our concierge service we offer our marina guests the choice of private luxury and shared pick up service to/from Whitsunday Coast airport. We can also arrange transfers to/from Port of Airlie to meet your ferry service to the islands. Fees apply.

Helicopter Service: We can arrange helicopter transfers to and from Whitsunday Coast & Hamilton Island airports directly to Coral Sea Marina Resort as well as tours over the Whitsunday Islands and Great Barrier Reef. The Coral Sea Flight Collection with Helireef includes superb flight options for activities such as playing golf at Dent island, visiting Heart Reef or having a private picnic on Whitehaven Beach. For prices and details, please contact our Guest Services team.

Ocean Club: Our floating guest lounge is complete with twelve en-suite private amenities, the Ocean Club Spa, a business centre, expansive sun deck complete with ice-maker, coffee machine, BBQ, Wi-fi and much more. Speak to our team about how you can experience Ocean Club.

Activity Bookings: Should you wish to book any tours, accommodation or restaurants whilst staying with us at the marina, our Guest Services

team can make those arrangements on your behalf.

Amenities

Shower and bathroom facilities are available at both the south and north marina villages, as well as at Ocean Club. Your marina access card provides access to these amenities. To ensure high levels of cleanliness we complete regular checks of all our facilities. Please contact us if there is anything you believe needs our attention.

Refuse & Recycling

Help Coral Sea Marina Resort maintain our beautiful environment by using the appropriate bins to reduce the amount of land-fill wasted produced. We have two refuse disposal stations - adjacent to the north marina office (in the turning circle), and behind the south marina office. There are mixed recycling and cardboard bins available and we kindly ask that you please crush and/or flatten cardboard boxes. Refuse is cleared on a daily basis.

Trolleys

Trolleys are available to help with provisioning, refuse disposal etc. There are three dedicated locations for trolleys - in the north village, south village and at Ocean Club.

Please see Guest Services in the north marina office for trolleys located in the north village as these remain locked at all times.

We kindly ask that you return trolleys from where they were borrowed. A \$20 retrieval fee will be charged if the trolley is not returned.

Power Supply

3-phase power (32amp, 63amp or 125amp) will incur additional charges based on consumption. 15amp shore power is available and use of multiple 15amp/ single phase power incurs an additional daily charge.

Insurance

All vessels staying in the marina must have current full comprehensive insurance including P&I (Protection & Indemnity) cover to the value of A\$10M. Insurance must be from a provider that is licensed to operate in Australia under the Australian Prudential Regulation Authority (APRA). A copy of the vessel's current insurance documentation is required, along with a signed copy of the Berthing Agreement, detailing the terms and conditions of the marina, when checking in.

Electrical Cords

It is mandatory that all electrical leads connecting to our shore power must be tested by a qualified professional and have a current and valid tag displayed on the lead. It is also compulsory that all single phase power leads are to have a current rating no less than 15amp for safety requirements.

Contractors & Tradespeople

A Contractor Induction Program has been introduced to ensure the high standard of service provided by contractors and tradespeople here onsite. In accordance with WHS legislation, Coral Sea Marina now requires all contractors and tradespeople to check in at the marina office prior to work commencing in order to complete the required induction program. Insurance and qualification certificates are mandatory for the induction and all power tool leads must be tested and tagged. Inducted contractors will be identified with a contractor lanyard and access card, \$50 per card payable at time of induction. Boat owners are responsible for ensuring any tradespeople they engage to work on their vessel have completed our induction program.

Night Duty Manager

Our Night Duty Manager has a full time presence in the marina nightly from 6pm - 5am. If you have any issues in the marina during these hours, please phone +61 488 140 923.

We Welcome Feedback

Please contact us should you have any concerns or suggestions that may improve our services or facilities. We are always looking for ways to improve the guests experience. A guest questionnaire is included in the welcome pack allowing your written feedback and we thank you in advance.

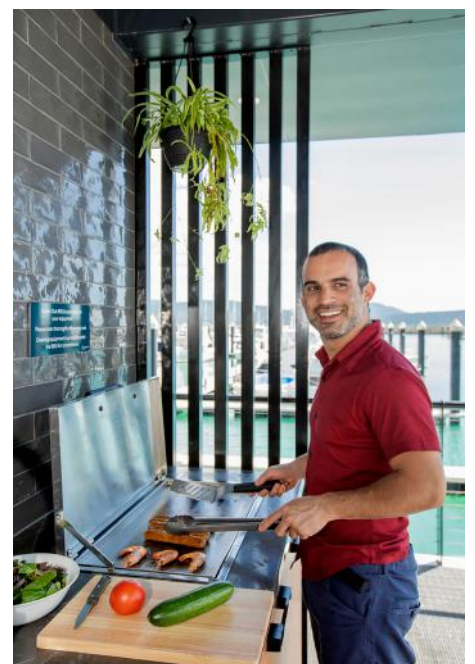
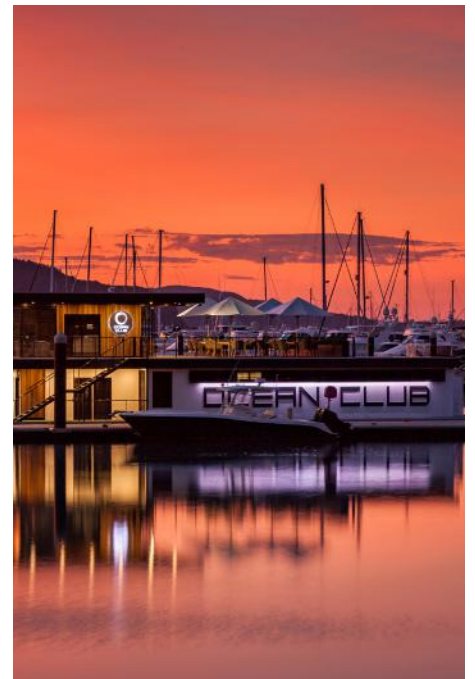
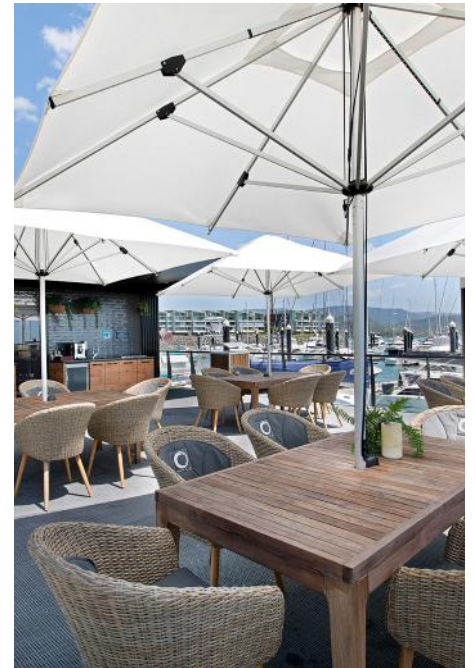


Ocean Club

Ocean Club is now a complimentary service included in our utilities service, available for all private marina guests. Ocean Club is design to add a touch of comfort to our our guests experience and act as an informal meeting area where like-minded boaties can share a coffee, a cold beer or a chat about their latest on-water adventure.

With twelve private en-suite bathrooms and a coin-operated laundry on the first floor, plus a Spa and sundeck on the second floor, Ocean Club is the perfect place to relax any time of the day. In addition, Ocean Club has the following services available:

- Complimentary tea and coffee making facilities
- Complimentary lifestyle and marine magazines - please take one with you to enjoy back at the boat
- BBQ facilities - please enjoy and be respectful of other users
- Book Swap
- **Business Centre** - A quiet space to get some work done if required, with a laptop available for complimentary use. Open 9.30am-4pm daily.
- Drinks fridges to keep your BYO beverages cold
- Ice Maker - to add to that 5 o'clock Gin & Tonic!!
- Guest Wi-Fi hotspot - see Guest Service team for guest login details
- **Ocean Club Spa Room** - With a range of treatments available, the Spa is available between 9am-6pm daily by pre-appointment only. For bookings: **E: oceanclubspa@gmail.com T: 07 4946 4747**





Leisure Services

Airlie Beach Dining

THE DECK AIRLIE BEACH

277 Shute Harbour Road
Airlie Beach QLD 4802
Ph: 07 4948 2721

LA TABELLA

The Esplanade
Airlie Beach QLD 4802
Ph: 07 4948 1888

KCS BAR & GRILL

382 Shute Harbour Road,
Airlie Beach QLD 4802
Ph: 07 4946 6320

NORTHERLIES

Lot 116, Pringle Road.
Airlie Beach QLD 4802
Ph: 1800 68 22 77

FISH D'VINE

Cnr Shute Harbour Rd & Coconut Gve
Airlie Beach QLD 4802
Ph: 07 4948 0088

WHITSUNDAY SAILING CLUB

Coconut Grove
Airlie Beach QLD 4802
Ph: 07 4946 6138

THE PUB

Airlie Beach Hotel
16 Airlie Esplanade, Airlie Beach QLD 4802
Ph: 07 4964 1999

FAT FROG BEACH CAFÉ

44 Coral Esplanade
Cannonvale Beach QLD 4802
Ph: 0417 979 960

Hair & Beauty

OCEAN CLUB SPA ROOM

Coral Sea Marina South, Shingley Drive,
Airlie Beach QLD 4802
Ph: 0476 553 683
E: oceanclubspa@gmail.com

ADAM & EVE (HAIR, FACE, BODY)

Shop 16, Whitsunday Business Centre
Cannonvale, QLD, 4802
Ph: 07 4948 2711

GUYS & DOLLS HAIR STUDIO

4/295 Shute Harbour Rd (Main St)
Airlie Beach QLD 4802
Ph: 07 4948 1466

Fitness

AIRLIE FITNESS

14 Paluma Rd, Cannonvale or 1 Erromango Drive,
Jubilee Pocket
Ph: 07 4948 3373 / 07 4946 5875

FITNESS VENUE WHITSUNDAY

173 Shute Harbour Rd
Cannonvale QLD 4802
Ph: 07 4946 7703

YOGA THERAPIES

76 Shute Harbour Rd
Cannonvale QLD 4802
M: 0415 981 729

VARTAMANA YOGA & SPA

3/33 Port Drive
Airlie Beach QLD 4802
Ph: 07 4946 4747

Boutiques

PAYA BOUTIQUE

5/115 Shingley Dr
Cannonvale QLD 4802
Ph: 07 4946 7577

SWIM SWIM SWIM

The Esplanade
Airlie Beach QLD 4802
Ph: 07 4946 4536

AIRLILYWOOD

Shop 20/370 Shute Harbour Road,
Airlie Beach, QLD, 4802
Ph: 0400 796 241

ABOVE AND BELOW

PHOTOGRAPHY GALLERY

Shop 12a Port of Airlie, Port Drive,
Airlie Beach QLD 4802
Ph: 0419 941 162

Florists

SOFI & FLORA

Ph: 07 4946 4874
M: 0415 981 729

Marina Resort Dining



The Rocks

Conveniently situated poolside at the hotel, the newly renovated and rebranded restaurant, The Rocks, offers the perfect combination of ocean views, al fresco dining and a sensational menu.

Overlooking the freshly manicured lawn, beach, towering palms, and calm azure waters, it boasts quite possibly the best dining position in Airlie Beach.

Sit down to an enjoyable lunch after a refreshing dip in the pool, or sip on your preferred cocktail whilst the sun goes down, followed by a delectable dinner served with breath-taking views.

Marina guests are entitled to a 10% discount at The Rocks. Simply present your marina access cards when making payment.

The Garden Bar Bistro

A contemporary bar and bistro located on the waterfront in the south marina village. The Garden Bar Bistro has stunning views over the marina and Coral Sea and captures the energy of the Whitsundays lifestyle with a relaxed yet spirited atmosphere.

Blending comfortable seating and stylish design, The Garden Bar Bistro offers the perfect place for afternoon drinks, sunset cocktails or an appetizing meal. Enjoy live music at the weekends amongst other events such as trivia nights and wine tastings.

With a fresh bistro-style all-day menu, daily specials, great drink options, it is the perfect place to enjoy at any time of the day.



Sorrento Restaurant & Bar

Sorrento is uniquely located in the north marina resort village with unrivalled views over the marina and out over Whitsunday Islands. Well known amongst marina guests and locals for being the best place in Airlie Beach to catch the sunset, the extensive deck downstairs and balcony upstairs caters for large numbers to enjoy the afternoon sea breeze whilst dining on some gourmet delights.

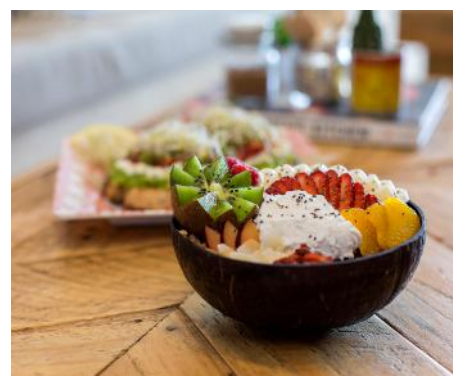
The bar and restaurant has a friendly, informal atmosphere and excellent Italian inspired menu - from pizza to pasta, from share platters to the finest steak, Sorrento is the place to relax and take in the magnificent views of the Whitsundays. Open daily from 11am.

Bohemian Raw Café

Come and relax in this funky little waterfront café and feast your eyes on the freshly made, guilt-free menu! They offer something to suit the whole tribe with a wide range of dairy free, gluten free, meat, vegetarian and vegan options available and they promise you will have a happy tummy after a visit to Bohemian Raw...

The Boho team are masters of the superfood smoothie, acai bowls, freshly made wraps, super-salads, cocowhip, organic tea and coffee and locally brewed Mr Bean cold drip.

Open daily for breakfast and lunch. All you need to bring is your smile.



The Kiosk Café

Head down to The Kiosk Café for great coffee and a range of hot and cold snacks all freshly made with love. Open daily for breakfast and lunch, the newly renovated deck at The Kiosk Café is a great place to relax and watch the hustle and bustle of the north marina village.

Tuck into an Eggs Benedict or a full cooked breakfast, as the perfect way to start your day before heading out on the water. Snack on a sandwich or burger for lunch or enjoy a tapas style menu for dinner Thursday to Sunday. There is something for everyone at The Kiosk Café, 7 days a week!



Marina Resort Village Services

Services	Description	Telephone No.	Website Address
Marine Support Services			
AB Marine Electronics & Electrical	Marine electronics & electrics	07 4946 4070	www.abmarineelect.com.au
Airlie Marine Electrics	Marine electrical services	07 4948 1010	
All Marine Services	Marine mechanical, engineering & refrigeration services	07 4946 5411	www.allmarineservices.net.au
Aquadive	Dive shop and rentals	07 4946 4074	www.aquadive.com.au
Hawkes Boat Yard	Boat Yard	07 4946 6700	www.hawkesboatyard.com
Quadrant Marine	Chandlery	07 4946 4033	www.quadrantmarine.com.au
Great Barrier Reef Boat Sales	New & used vessel sales	07 4946 4404	www.gbrboatsales.com.au
Experience the Whitsunday Islands			
Charter Yachts Australia	Bareboat Charters	07 4946 6666	www.charteryachtsaustralia.com.au
Cumberland Charter Yachts	Bareboat Charters	07 4946 7500	www.ccy.com.au
Ocean Rafting	Day Tour	07 4946 6848	www.oceanrafting.com.au
Queensland Yacht Charters	Bareboat Charters	07 4946 7400	www.yachtcharters.com.au
Red Cat Adventures	Day & Overnight Tours	07 4940 2000	www.redcatadventures.com.au
Whitsunday Jetski Tours	Day Tour	0459 538 754	www.jetskitour.com.au
Whitsunday Escape	Bareboat Charters	07 4946 5222	www.whitsundayescape.com.au
Food and Beverages			
The Rocks - Restaurant, Bar & Pool Club	Restaurant	07 4964 1300	www.therocksairliebeach.com
Bohemian Raw Cafe	Café	07 4948 0274	www.bohemianraw.com.au
The Garden Bar Bistro	Bar & Restaurant	07 4946 4277	www.gardenbarbistro.com.au
The Kiosk Café	Café	07 4946 6053	
Sorrento Restaurant & Bar	Bar & Restaurant	07 4946 7454	www.sorrentowhatsunday.com
Coral Sea Cellars	Bottle Shop	0418 310 660	www.coralseacellars.com.au
Weddings, Conferences, Events			
Coral Sea Weddings and Events	Multiple Event Venues	07 4964 1340	www.coralseaevents.com



Experience The Best Of The Whitsundays

The Whitsundays is well known for being an aquatic playground and home to a host of unique hero visitor experiences. Whether you prefer adrenalin and excitement or relaxation and rejuvenation, the 74 islands of the Whitsundays and the Whitsunday mainland coast has all this and more.

Great Barrier Reef

The world heritage listed Great Barrier Reef is on our doorstep and to visit this iconic natural wonder must be on your holiday 'to do' list. People worldwide dream of seeing the iconic formation of Heart Reef from the air or scuba diving with turtles and manta-rays on the Great Barrier Reef. The Whitsundays is the ideal place from which to visit the reef being host to a range of transport options providing access to one of the seven natural wonders of the world.

Whitehaven Beach

The crystal clear aqua waters and pristine silica sand of Whitehaven Beach stretch along seven kilometres of Whitsunday Island, the largest of the Whitsundays' 74 islands. The magical views from the lookout at Hill Inlet are sure to captivate, with the swirling white silica sands and sparkling waters creating amazing patterns, which are different with every tide. There are many ways to get to Whitehaven Beach for the day, with tours of all kinds departing from Coral Sea Marina.

Scuba Diving & Snorkelling

Coral reef gardens fringe nearly every island in the Whitsundays and these coral reefs are only a short boat ride from Coral Sea Marina. Scuba dive sites are sprinkled up and down the reef and are home to abundant marine life. If you have always dreamt of scuba diving or snorkelling on the Great Barrier Reef, let the Whitsundays provide you with access to some of the most beautiful dive sites in the world.

Sailing Paradise

With 74 island wonders, Whitehaven Beach and sailing friendly townships along the Whitsunday coast, it's not surprising that the Whitsundays is Australia's sailing paradise.

Airlie Beach and Hamilton Island are home to two of the country's most famous sailing regattas, taking place back to back in August every year. The race weeks are full of action packed sailing events along with plenty of on-shore activities on the race week calendar to keep the non-sailors in the family happy.

Whitsunday Coast

Explore the Whitsunday hinterland either on a local tour or make your own discoveries. Take a walk through the Whitsunday Great Walk or visit the beautiful Cedar Creek Falls. Relax by the Airlie Beach Lagoon or take a picnic out to the Lake Proserpine.

Whale Season (June - September)

Whales visit the Whitsundays every year during the winter months on their annual migration north. From June to September, whales are a common sight frolicking amongst the islands and on the Great Barrier Reef. They return year after year to the Whitsundays to give birth, choosing the warm, protected waters of the Whitsundays as an ideal nursery.

Indigenous History

Follow in the footsteps of the traditional owners of the Whitsundays, the Ngaro people. Track their history along the Ngaro Sea Trail, traversing three islands over land and sea. A highlight is the walking track leading to a sheltered cave in Nara Inlet, Hook Island, where you can view Aboriginal rock paintings.

Pamper Yourself

There's nothing like a little indulgence on holidays, a massage, a foot spa, a manicure and pedicure. You could also get your hair done and have a spray tan to complete the "I've just been on holiday's in the tropics" look. If you happen to find yourself on holiday in a little rain spell, it's even better as there's no need to feel guilty about missing hours of sunshine while being pampered indoors at the day spa!



Whitsunday Wildlife

The diversity of wildlife in the Whitsundays is one of its hidden gems. Below are some of our recommendations for locations you could experience wildlife wonders:

- **Butterfly Bay (Hook Island)** - late summer into early spring you will find swarms of butterflies of all different colours in this bay.
- **Tongue Bay/ Turtle Bay (Whitsunday Island)** - as the name of the latter suggests, these protected bays are favourites with the green and loggerhead turtles found readily in the Whitsundays.
- **Whitsunday Passage** - during breeding season (June - October) you will be likely to see Humpback whale mothers with their calves exploring the Whitsunday waters. Whitsunday passage is their favourite playground, due to the cool waters of the deep channels which run throughout.
- **Burning Point (Shaw Island)** - Beach Stone Curlews use this site as a nesting ground from October to March. Observe from a distance, as they are very protective of their young!
- **Long Island** - the incredibly shy and endangered Proserpine Rock Wallaby are often found scampering across bush tracks. Smaller than normal wallabies, these natives are found across many of the Whitsunday islands.

Remember to take only memories and leave only footprints.

** Please refer to our website for more information on interacting safely with marine wildlife in the Great Barrier Reef Marine Park.



Explore the Coast

- **Conway National Park** - With multiple scenic walking trails through the tropical coastline you can explore hidden gems including waterfalls, lookouts and secluded beaches.
- **Cedar Creek Falls** - A leisurely 30 minute drive from Airlie Beach, Cedar Creek Falls is a naturally formed waterfall and swimming hole. Best enjoyed in the wetter months of summer.
- **Proserpine** - Just 20 minutes inland from Airlie Beach, the charming township of Proserpine boasts quintessential Australian charm and country atmosphere.
- **Proserpine Dam** - A freshwater escape located a further 30 minutes inland from Proserpine. After a scenic drive through the Whitsunday outback you can enjoy wake-boarding, jetskiing, and most famously, fresh water fishing where Barramundi is plentiful.
- **Hydeaway Bay & Dingo Beach** - These small coastal hamlets are one of the Whitsundays' best kept secrets. A strong favourite with locals and only a 40 minute drive north. Enjoy lunch at the beachside resorts, fish from the palm-fringed shore or head out on the water to explore the fringing reefs.
- **Bowen** - A relatively undiscovered coastal town rich in history with picturesque beaches and sunsets. Famous for its local mango production, as well as being able to physically walk to the reef from the beach, Bowen is located only 45 minutes drive north of Airlie Beach.



Whitsunday Hidden Gems

The Best Walking Tracks

Listed below are some of the best walking tracks available around the Whitsunday Islands. These tracks vary in the fitness level required. We recommend you always take water, sunscreen and your camera for that perfect panoramic shot!

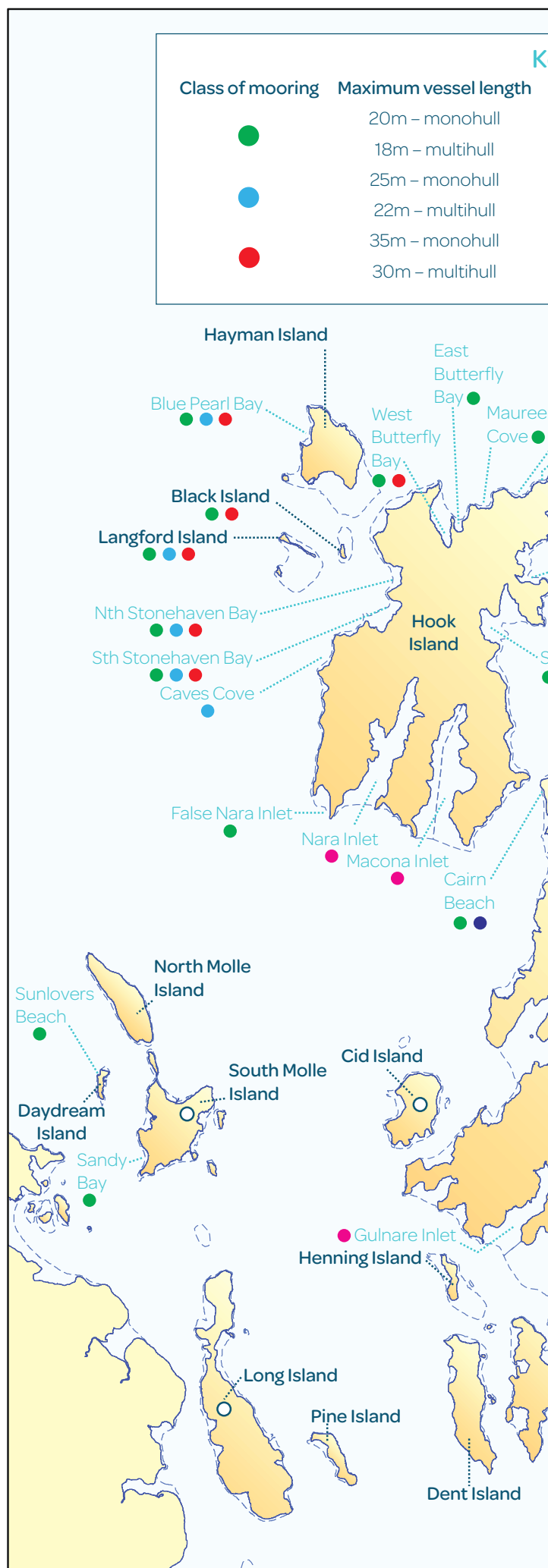
- **Solway Circuit** - Whitsunday Island (1.2km return. Allow 40 mins.)
- **Chance Bay to Whitehaven Beach** - Whitsunday Island (7.2km return. Allow 2.5-3hrs.)
- **South Whitehaven Beach Lookout** - Whitsunday Island (2.4km return. Allow 1.5hrs.)
- **Dugong Beach to Saw Mill Beach** - Cid Island (3km return. Allow 1 hr.)
- **Whitsunday Peak** - Cid Island (5km return. Allow 4 hrs.)
- **Sandy Bay to Mount Jefferys** - South Molle Island (8km return. Allow 4 hrs.)
- **Bauer Bay to Spion Kop** - South Molle Island (9.2km return. Allow 4 hrs.)
- **Chalkies Beach** - Haslewood Island (0.55km return. Allow 20 minutes)
- **Palm Bay to Humpy Point** - Long Island (2.6km return. Allow 1hr.)
- **Long Island Circuit** - Long Island (3.5km return. Allow 1.5hrs.)
- **Border Island trail** - Border Island (1.2km return. Allow 1hr.)



The Most Incredible Views

Whilst all of these views require a walk to access them, they are worth every step when you experience the panoramic views:

- **Solway Circuit** - Whitsunday Island
- **Whitsunday Peak** - Cid Island
- **Hill Inlet Lookout** - Whitsunday Island
- **Langford Island Lookout** - Langford Island
- **Spion Kop** - South Molle Island
- **Mosstrooper Peak** - Border Island
- **Long Island Circuit** - Long Island
- **One Tree Hill** - Hamilton Island
- **Passage Peak** - Hamilton Island



Key

Class of mooring

Activities

34 knots



Walking Tracks

34 knots



Kayaking/ SUP

34 knots



Snorkeling

Note: These moorings are new additions in 2018



The Perfect Place To Paddle

If time is on your side, there are plenty of stunning anchorages best explored by kayak or stand-up paddle board. Here are our suggestions:

- Macona Inlet
- Nara Inlet
- Gulnare Inlet
- Turtle Bay
- Hill Inlet
- Woodwark Bay
- Saba Bay
- Neck Bay



Explore The Indigenous History Of The Whitsundays

The Ngaro and Gia people are the traditional custodians of the Whitsundays and their rich history can be explored throughout the Whitsunday islands:

- **Nara Inlet** - enjoy a stunning bush-walk and explore the ancient rock art at the Ngaro Cultural Site.
- **Hill Inlet** - explore the deep history of the Ngaro people as you walk the Hill Inlet lookout track from Tongue Bay, with interpretive displays along the track.
- **Ngaro Sea Trail** - follow the trail via kayak or boat, as you traverse the routes the traditional custodians of the Whitsundays once travelled.

Useful Information **Emergency: Fire / Police / Ambulance Phone: 000**

Doctors	Location	Contact
121 Medical Centre	Cannonvale	07 4946 4622
Whitsunday Family Practice	Cannonvale	07 4948 3323
Hospital (Emergency & General)	Proserpine	07 4813 9400
Dentist		
Airlie Smile Care	Airlie Beach	07 4946 7600
Brian Poschelk Dental	Cannonvale	07 4946 6433
Chemist		
Airlie Beach Day & Night Chemist (Airlie Beach)	Airlie Beach	07 4946 7000
Whitsundays Pharmacy (Whitsunday Shopping Centre)	Cannonvale	07 4946 6950
Chiropractic Services		
Lifestyle Chiropractic Australia	Airlie Beach	07 4946 7111
Physiotherapy		
Airlie Beach Physiotherapy	Airlie Beach	07 4946 4922
Therapeutic Massage		
Massage First	Cannonvale	07 4948 1430
Maritime Safety		
Maritime Safety Qld (MSQ)	Airlie Beach VTS Hay Point	07 4841 4500 A/Hours incident reporting: 07 4956 3489
Volunteer Marine Rescue Whitsunday (VMR)	Cannonvale A/Hours emergency	07 4946 7207 0410 013 881
Shopping Centres		
Whitsunday Plaza	8 Galbraith Park Dr, Cannonvale	07 4946 1505
Whitsunday Shopping Centre	226 Shute Harbour Rd, Cannonvale	07 4948 0441

Getting Around The Whitsundays

Air Travel	Contact	Description
Jetstar	131 538	Providing direct flights to/from the Whitsunday Coast/Proserpine Airport (PPP) from BNE & MEL. Providing direct flights to/from the Hamilton Island Airport (HTI) from BNE, SYD & MEL.
Virgin Australia	136 789	Providing direct flights to/from the Whitsunday Coast/Proserpine Airport (PPP) from BNE. Providing direct flights to/from the Hamilton Island Airport (HTI) from BNE, SYD & MEL.
Whitsunday Airport	07 4946 9180	Light planes only
Hellireef	07 4946 9102	Providing airport transfers and scenic flights out over the Whitsundays.
Airport Transit Services Bus Transport		
Whitsundays 2 Everywhere	07 4946 4940	Airport transfer service from Whitsunday Coast Airport and Mackay Airport
Whitsunday Transit	07 4946 1800	Providing local bus services to the Whitsunday Region.
Heart of the Reef Shuttles	07 4948 2385	Door to door airport transfer service from Whitsunday Coast Airport
Ferry Services and Water Taxi		
Cruise Whitsundays	07 4846 7000	Ferry Service for the Whitsunday region. Located at Maritime Terminal in Port of Airlie.
Mars Charters	1800 202 909	Water Taxi service from Airlie Beach and Shute Harbour to Long Island and Hamilton Island airport.
Hire Cars		
Avis	07 4967 7188	Hire cars to suit all budgets.
Europcar	07 4946 4133	Hire cars to suit all budgets.
Hertz Australia	07 4946 4687	Hire cars to suit all budgets.
Tropic Car & Ute Rental	07 4948 3415	Car and ute hire for large loads and removals.
We Do Scooters & Cars	07 4946 6969	Car and scooter hire.
Taxis		
13cabs	13 2227	Providing local taxi services throughout the Whitsunday region.

Other Services

Services	Telephone No.	Address
Provisioning		
Coles (Online Delivery Available)	07 4946 4869	Whitsunday Shopping Centre
Fishi	0409 411 294	5/22 William Murray Dr
Goodness Gracious Health Foods	07 4948 2596	2/44 Coral Esplanade (behind Fat Frog Cafe)
Master Butchers Whitsundays	07 4946 6753 / 07 4946 7461	42 Stewart Drive / Whitsunday Shopping Centre
The Prickly Pineapple	07 4948 3926	Whitsunday Plaza
Whitsunday Food Service	07 4946 1322	25 Galbraith Park Dr
Slice of Nature	0424 307 749	Shop 7/37 Stewart Dr
Woolworths - Airlie Beach Central	07 4967 5705	Waterson Way
Woolworths (Online Delivery Available) - Cannonvale	07 4967 5702	Whitsunday Plaza
Bottle Shops		
Coral Sea Cellars	0418 310 660	Coral Sea Marina, South Village
Banks		
ANZ	13 13 14	Whitsunday Plaza
Bendigo Bank	07 4948 3599	Shop B7A Whitsunday Plaza
Commonwealth Bank	13 22 21	Whitsunday Shopping Centre
NAB - National Australia Bank Ltd	07 4946 6955	348 Shute Harbour Rd
Westpac	07 4946 0388	Whitsunday Shopping Centre
Hardware & Plumbing Stores		
Bunnings	07 4948 7300	Cnr Shute Harbour Road & Pandanus Dve, Cannonvale
Home Timber and Hardware	07 4946 7171	108 Shute Harbour Rd, Cannonvale
Marlin Marine - Chandlery	07 4946 6453	2622 Shute Harbour Rd, Jubilee Pocket
Porters Mitre 10	07 4948 5555	Paluma Rd, Cannonvale
Reece	07 4948 2311	1/LOT 3 Tropic Rd, Cannonvale
Tradelink	07 4948 3577	Cnr Galbraith Park & Myer Lasky Drives, Cannonvale
Other Services		
BCF - Boating, Camping & Fishing	07 4948 3909	Whitsunday Plaza
Optus	07 4948 3180	Whitsunday Plaza
Post Office	13 13 18	Shop 3a, 14 Paluma Road, Reef Plaza
Telstra	07 4948 3773	Shop 13, Whitsunday Plaza
Whitsunday Mobile Laundry & Mending Service	0488 102 940	Laundry, Ironing & Mending
Vessel Services		
All Points Marine	0413 136 078	Skippering & Detailing / Vessel Management
GT Marine	0405 196 723	Marine Detailing
JD Marine	0497 263 035	Engineering & Mechanical
Platinum Marine Services	0438 950 463	Vessel Maintenance & Repairs
Airlie Gas & Plumbing	07 4948 1056	Plumbing & Gas Fitting Services
Robs Marine Service	0401 481 695	Diving Services, Hull Scrubbing, Search & Recovery +
Tony Herbert	0439 662 013	Commercial Diving & Hull Scrubbing
Whitsunday Superyacht Services	0451 846 620 0451 844 310	Vessel Maintenance & Repairs
Upholsters Sailmakers		
Airlie Sails and Shade Solutions	07 4946 1125	Sailmaker
Airlie Upholstery	07 4946 6507	Cars, boats, furniture, carpet overlocking
John Sails	0418 797 103	Upholstery & sailmaker
Whitsunday Industrial Sewing	0419 775 282	Shade & sails, blinds & clears, vinyl & canvas awnings, covers & upholstery
Whitsunday Sail Loft	07 4948 1868	Sailmaker



Environmental Responsibility

The Last Straw Campaign

With over 500 million plastic straws being discarded every day globally and each straw taking up to 450 years to degrade, the team at Coral Sea Marina Resort felt like it was time to take environmental action.

With 22 businesses and 53 commercial tourism operators calling Coral Sea Marina Resort home, the next step for the marina was to spread the message and encourage participation in the campaign. In an overwhelming response, all five marina food venues have committed to becoming plastic straw free.

The Garden Bar Bistro, The Rocks - Restaurant, Bar and Pool Club, The Kiosk Café, Bohemian Raw Café and Sorrento Restaurant & Bar have all taken the pledge to no longer provide plastic straws in beverages and only provide paper straws on request. By committing to becoming plastic straw free, these five venues alone have removed 70,000 plastic straws from circulation.

Purging Plastics

Coral Sea Marina is working towards the elimination of single-use plastics from within the marina precinct after signing a pledge with the Marina Industries Association in 2019. In addition to The Last Straw Campaign, we are continually introducing new initiatives to assist this pursuit.

Following the removal of single use plastic bags from the local Whitsundays supermarkets in July 2018, Coral Sea Marina supplies all guests with an environmentally friendly shopping bag on arrival. Our courtesy car fleet will also have environmentally friendly bags available for your convenience. Additional bags are available for purchase at the south marina office.

In addition, there are several Hydration Stations located throughout the marina resort where you can refill water bottles to reduce the purchase of plastic bottles. You can even purchase your own Enviro Water Bottle to keep, available from either of the marina offices.

Clean Marina

Coral Sea Marina is a certified Clean Marina Level III. Since we are located on the doorstep to the Great Barrier Reef Marine Park, we are passionate about conserving our marine environment and ask that our guests assist us in this cause, where possible.

What can you do to keep our marina clean?

1. Reuse and recycle - both north and south marina villages have recycling facilities for paper, cardboard, glass, aluminum cans and hard plastics. We encourage all guests to make full use of the marina recycling facilities during their stay.
2. No fishing - our marina is certified Fish Friendly, so no fishing is permitted within the marina precinct.
3. Nothing to be thrown overboard - please contain all your rubbish (including liquids) and dispose of it in the correct manner.
4. Sewage - all sewage must be disposed off at the pump-out facilities on the fuel dock. No toilet discharge permitted in the marina.
5. Conserve water - if you see a tap dripping please turn it off, don't leave hoses unattended when filling water tanks and report any damaged hoses and/or fittings to the marina office.

Do you have any suggestions on how we can better conserve our marine environment? We would love to hear from you!



Marina Code Of Conduct

Welcome to Coral Sea Marina Resort, we hope you enjoy your stay with us. To ensure your safety, the safety of your vessel and the safety of marina guests we ask you abide by the following Code of Conduct.

1. Vessel

- The Vessel must be kept in a sound, safe, secure, watertight and seaworthy condition.
- The Vessel will only be admitted to the Marina if it is in a seaworthy condition and is under its own power.
- You must not discharge anything of whatever nature into the waters in the Marina.
- You must keep the decks of the Vessel free and clear of debris, bottles, papers, trash and other unsightly material at all times.
- You must ensure that the Vessel is secured appropriately when not in use for any period of time.

2. Berth

- You must keep the Berth, and any other area of the Marina used by You from time to time, in a clean state and free from rubbish at all times.
- Only approved power leads which are compliant with Australian Standard AS 3760_2010 In-service safety inspection and testing of electrical equipment, have been checked for correct polarity, have been tested and tagged by a licensed electrical contractor within a reasonable time prior to the Start Date and inspected by Us can be used to connect to the power supply which runs to the Berth.

3. Conduct

- You must ensure that no unauthorized persons or external contractors access the Marina.
- Enclosed footwear must be worn at all times while You are within the Marina Precinct.
- Noise should be kept to a minimum at all times.
- Swimming, diving and/or fishing within the Marina is prohibited.
- Children must be supervised and accompanied by adults at all times while in the Marina Precinct.
- Animals must be leashed/caged at all times.
- No feeding of fish or birds within the Marina is permitted.
- Consumption of alcohol is prohibited within the Marina Precinct, except within licensed premises or onboard the Vessel.

- Smoking is not permitted anywhere in the Marina Precinct except in those areas (if any) which are designated as being smoking areas. No cigarette butts are to be disposed overboard.
- You must not do anything with his immoral, noxious, offensive, hazardous or likely to cause nuisance or injury to any person.
- You shall be solely responsible for the conduct of Your Associates.
- Laundry of any type or items of apparel or equipment must not be hung out to dry or air in public view aboard the Vessel or any part of the Marina Precinct.
- No chemicals, flammable or volatile liquids or substances (including gas) may be stored in the Vessel.
- All sewerage must only be disposed of in the sewage pump out station at the Marina.
- Nothing must be thrown overboard the Vessel while it is in the Marina, including but not limited to fish scraps.
- You must not display any 'for sale' or other similar sign.
- You must not undertake or perform any works or alterations to the Vessel including but not limited to sanding, sandblasting, painting, hot works, welding, hull cleaning, fitting out or refitting whatsoever.
- You must not allow any contractors or tradespeople to carry out works to the Vessel or otherwise within the Marina Precinct unless they have been approved to work within the Marina by Us.
- You must not allow any vessel other than the registered Vessel to use the Berth.

4. Extreme Weather Preparedness

- You must promptly comply with, and be aware of Your Obligations under, the Extreme Weather Procedure.
- A copy of the Extreme Weather Procedure is available on the Coral Sea Marina website.

5. General

- The fire fighting equipment within the Marina must not be used for any purpose other than fire fighting, without Our prior written consent.



A CORAL SEA ADVENTURE IS CALLING

There's always something happening at Coral Sea Marina Resort, a tropical playground where you can wine, dine and relax... or laze beside the pool! Step off your yacht and immerse yourself in the Whitsunday's way of life overlooking the mesmerising Coral Sea. With restaurants, bars and a lively resort village to explore, you'll love every moment, because this is where adventures begin.

EXPERIENCE THE CORAL SEA RESORT HOTEL

Book online using promo MARINA2020 to receive a special discount on hotel accommodation at the Coral Sea Resort Hotel.

T: 07 4964 1300 | E: hotel@csmr.com.au

Let the adventure begin - you'll love every moment...

STAY PLAY AND EXPLORE CORAL SEA MARINA RESORT AT WWW.CSMR.COM.AU



CORAL SEA
MARINA | RESORT



CORAL SEA
MARINA | RESORT

What's On

With a packed marina events calendar, plus some incredible regional events occurring throughout the Whitsundays, the best place to keep up to date with everything that is happening is via our website on the 'What's On' page and calendar. We regularly update the marina news section of our website also, so jump online and don't miss out on all the things to do here at Coral Sea Marina Resort and in the Whitsundays: csmr.com.au

Stay Connected

Join Coral Sea Marina Resort on social media to stay connected. Find us on:

#stayplayexplore

#coralseamarina

#coralsearesort

#coralseamarinaresort

Use our hashtags to share your posts with our online community.



The Whitsundays

THE HEART OF THE GREAT BARRIER REEF

+617 4946 2400
marina@csmr.com.au
Shingley Drive, Airlie Beach, Qld 4802

STAY, PLAY AND EXPLORE CORAL SEA MARINA RESORT AT WWW.CSMR.COM.AU



CORAL SEA
MARINA | RESORT